



## 12FOS and 22FOS

### Multi Cartridge Housings

Our twelve and twenty-two round models are designed for flow rates up to 600 GPM. Housings accept double-open-end style cartridges. Options include 304L or 316L stainless steel; band clamp or swing bolt closure. Design pressure 150 psi (10 bar) @ 300° F (149° C). Standard inlet and outlet connections for the 12FOS series is 3" flanged and the 22FOS series is 4" flanged, with many other options available by special order. Standard finish is Poly-coat over stainless. All twelve and twenty-two round models are standard with heavy duty mounting legs. Standard gasket is FDA grade Buna-N.

## Features

- Designed for industrial and commercial filtration needs
- Heavy duty stainless steel construction for durability
- 304L standard and 316L stainless steel available
- Band clamp and swing-bolt closures for quick cartridge change outs
- Heavy duty mounting legs standard
- Pipe fittings readily accessible for easy installation
- Knife edge seal at both cartridge ends to eliminate by-pass
- Adjustable top plate for more cartridge options
- Adapters for 222 or 226 style cartridges available by special order.
- Complete selection of pipe fittings, flanged, sanitary, BSP, Grooved and others
- See ordering guide for a complete section of options to fit your application



Adjustable top plate accepts variable length cartridges

## Standard Design Specifications

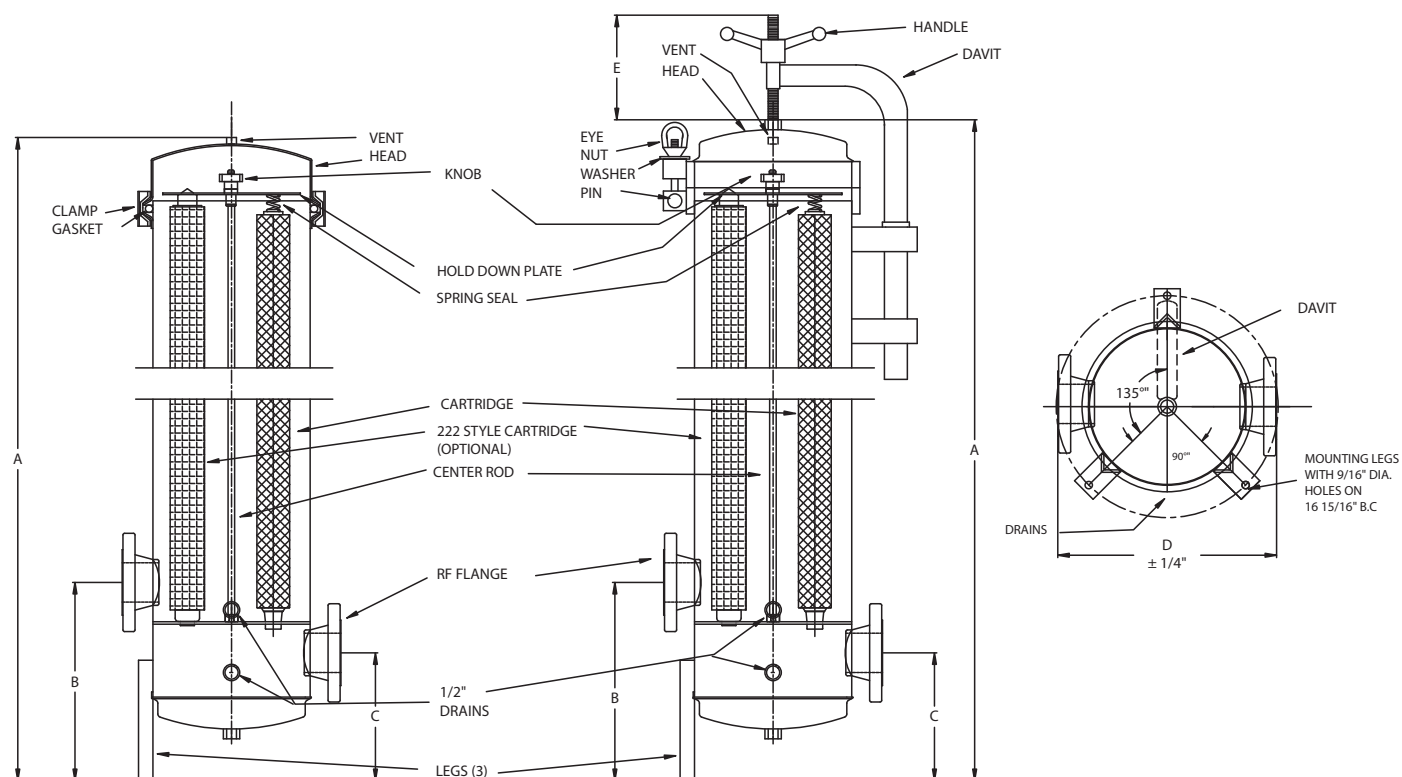
Model	No. & (length) Of Cartridges†	Flow Rate GPM*	Flange Size	Drains	Vent	Max Ctg Diameter°	Shipping Weight Clamp	Shipping Weight SB
12FOS2	12 (20")	168	3F	1/2" NPT	1/4" NPT	2 3/4" OD	86 lbs	131 lbs
12FOS3	12 (30")	252	3F	1/2" NPT	1/4" NPT	2 3/4" OD	92 lbs	142 lbs
12FOS4	12 (40")	336	3F	1/2" NPT	1/4" NPT	2 3/4" OD	100 lbs	150 lbs
22FOS3	22 (30")	462	4F	1/2" NPT	1/2" NPT	2 5/8" OD	140 lbs	205 lbs
22FOS4	22 (40")	616	4F	1/2" NPT	1/2" NPT	2 5/8" OD	165 lbs	225 lbs

† Housings will accept: 20" = (19 1/2" or 20") 30" = (29 1/4" or 30") 40" = (39" or 40") Lengths

\*Based on 7 gpm per 10" length with a 25 micron wound cartridge at 2 psid clean and a viscosity of 1 cps. Flow rates are for guide lines only. Actual flow rates are based on fluid, viscosity, cartridge type, micron ratings and other factors.

° When using 222 or 226 adapters with the 22 FOS series housing you must change it to a 21 FOS (21 Round) max cartridge OD 2 3/4"

## Dimensions



MODEL	CLAMP STYLE	SWING BOLT STYLE				
	DIM. A	DIM. A	B	C	D	E
12FOS2	20 1/2"	40 1/2"	15 1/8"	9 3/4"	16 11/16"	8"
12FOS3	49 1/2"	50 1/2"	15 1/8"	9 3/4"	16 11/16"	8"
12FOS4	59 1/2"	60 1/2"	15 1/8"	9 3/4"	16 11/16"	8"
22FOS3	50 3/16"	50 3/16"	15 1/4"	9 1/2"	21"	10"
22FOS4	60 3/16"	50 3/16"	15 1/4"	9 1/2"	21"	10"

## ORDERING GUIDE

12	FOS	3	- SB -	316	- 222 -	3F	- EP -	GP	- E
No. of Columns	Product Code	No. of Stacks	Closure Style	Material	Cartridge Configuration	Connection Type	Finish	Options	Gasket
12 22	FOS	12 FOS 2 = 2 High 3 = 3 High 4 = 4 High 22 FOS 3 = 3 High 4 = 4 High	Blank = V-Band Clamp SB = Swing Bolt	Blank = 304L 316 = 316L	Blank = Double Open Ended 222 = 222 Style Cartridge Fin or Flat 226 = 226 Style Cartridge Fin or Flat	12 FOS Blank = 3" Flanged 22 FOS Blank = 4" Flanged OPTIONS 2F = 2" Flanged 2TC = 2" Ferrules 2GF = 2" Grooved Fittings 3F = 3" Flanged 3TC = 3" Ferrules 3GF = 3" Grooved Fittings 4F = 4" Flanged 4TC = 4" Ferrules 4GF = 4" Grooved Fittings	Blank = Standard Poly Coat EP = Electro-Polished GB = Glass Bead P = Passivate	Blank = None GP = Gauge ports GPA = Gauge ports with gauges	Blank = Buna E = EPR S = Silicone V = Viton TS = Teflon Encapsulated Silicone



tel: 860.854.6121  
800.543.5843  
fax: 860.854.6120  
e-mail: info@shelco.com  
www.shelco.com

# SHELCO FILTERS

100 Bradley Street . Middletown, CT 06457 . USA