



## ***RHS, RHB Series***

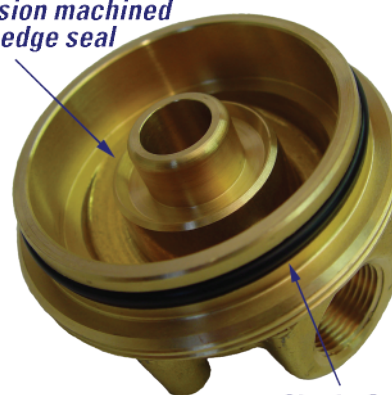
### ***Single Cartridge Housings for Liquids***

Our proven single shell design has been a standard in the industry for over 30 years. Available in either 316L Stainless Steel or Brass Head with a 304L body, the RH series is perfect for almost any application. The maximum design working pressure is 300psi @ 200°F. The RH series is available in a wide range of connection sizes to fit your application as well as a wide variety of gasket options that make this housing compatible with almost any fluid. The standard gasket material is Buna-N. Please refer to our ordering guide for a complete list of options or contact one of our technical specialists for help.

## ***Features***

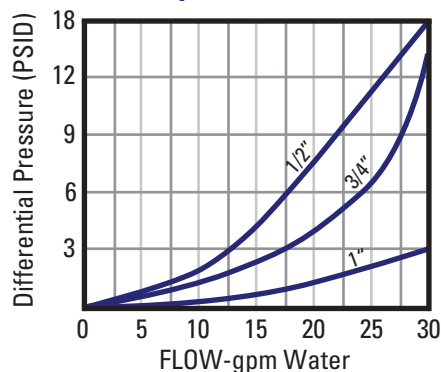
- Designed for industrial and commercial filtration needs
- Heavy duty construction for durability
- Offered in several materials
- Simple ring closure for quick cartridge change outs
- In line fittings for easy installation
- Knife edge seal at both cartridge ends to eliminate by-pass
- Housings accept double-open-end cartridges
- Complete selection of pipe fittings: flanged, sanitary and BSP
- Standard with mounting bracket kit

***Precision machined knife edge seal***



***Single O-Ring seal***

***Housing Pressure Drop vs. Liquid Flow Rate***

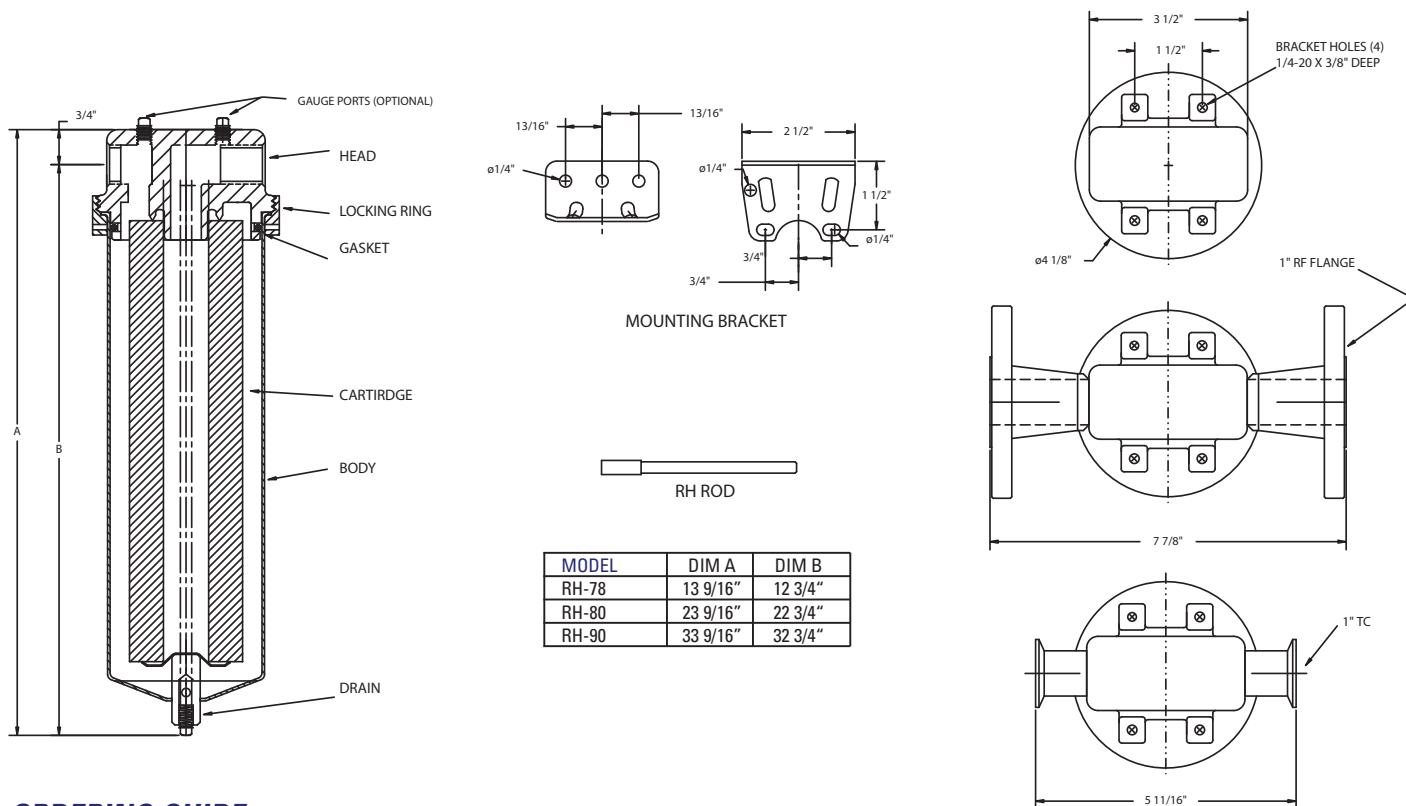


## ***Standard Design Specifications***

Model	Qty. (Length) of Cartridges	Flow Rate GPM*	Drain	Max Ctg Diameter	Approx. Ship Weight	Box Size
RH-78	1 (9 3/4")	7	1/8" NPT	2 3/4" OD	6 lbs	4x5x16
RH-80	1 (20")	14	1/8" NPT	2 3/4" OD	8 lbs	4x5x25
RH-90	1 (30")	21	1/8" NPT	2 3/4" OD	11 lbs	4x5x34

\*Based on 7gpm per 10" length with a 25 micron wound cartridge at 2PSID clean and a viscosity of 1 cps. Flow rates are guide lines only. Actual flow rates are based on fluid, viscosity, cartridge type, micron ratings and other factors.

# Dimensions



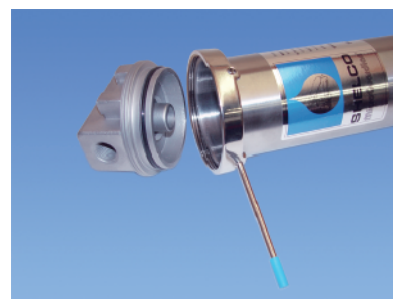
## ORDERING GUIDE

RH	S	-	78	8	-	1F	-	E
Model	Material		Cartridge Length	Pipe Size FNPT		Options		Gasket
RH	<b>S</b> 316L Stainless Steel with stainless steel drain plug		78 = 9 3/4" 80 = 20" 90 = 30"	4 = 1/2" 6 = 3/4" 8 = 1"		Blank = None BSP = BSP thread 1F = 1" Flange 1TC = 1" Ferrules *Vent = Vent Screw *GP4 = 1/4" gauge port *GP8 = 1/8" gauge port DSG = Variable Seal (spring loaded) 10 = 10" Cartridge Length 195 = 19 1/2" Cartridge Length 294 = 29 1/4" Cartridge Length		Blank = Buna E = EPR S = Silicone V = Viton
RH	<b>B</b> Brass head 304L stainless steel sump with brass petcock drain.		78 = 9 3/4" 80 = 20" 90 = 30"	4 = 1/2" 6 = 3/4" 8 = 1"		Blank = None BSP = BSP thread *Vent = Vent Screw *GP4 = 1/4" gauge port *GP8 = 1/8" gauge port DSG = Variable Seal (spring loaded) 10 = 10" Cartridge Length 195 = 19 1/2" Cartridge Length 294 = 29 1/4" Cartridge Length		Blank = Buna E = EPR S = Silicone V = Viton

\*When ordering vents or gauge ports you must specify location:

I = Inlet; O = Outlet; I/O = Inlet and Outlet.

Example: GP4I or GP4I/O



Ring Closure



tel: 860.854.6121  
800.543.5843  
fax: 860.854.6120  
e-mail: info@shelco.com  
www.shelco.com

# SHELCO FILTERS

100 Bradley Street . Middletown, CT 06457 . USA